




FRANCE

19 GRADUATE
SCHOOLS,
LOIRE VALLEY REGION,
ARE PLEASED TO WELCOME
THE 22ND EAIE CONFERENCE
TO NANTES

Discover your
CONFERENCE HOSTS ...



Grandes Écoles
Pays de la Loire



Your conference hosts are the “Conférence des Grandes Ecoles Pays de la Loire”, an association of 19 fully accredited graduate-level institutions

What is a Grande Ecole ?

The Grandes Ecoles are uniquely French institutions. Created in the early 19th century, they focus primarily on the fields of engineering, management and life sciences. They enjoy a reputation for excellence in both teaching and research. Admission is very selective with graduation at Master's level, 5 years after the Baccalaureat (High school graduation), or at doctoral level after a further 3 years.

Graduates from the Grandes Ecoles are in high demand from recruiters.



Relations with the corporate world

The Grandes Ecoles have close ties with the economic environment and the corporate world. They are very much «management oriented» and have cooperation with thousands of companies. This is a unique feature of the Grandes Ecoles and sets them apart from higher education institutions elsewhere in the world.

- Up to 12 months experience in the corporate world through internships and company projects.
- Numerous consultancy and technology transfer research activities
- Significant funding from companies.
- Prominence of Grandes Ecoles alumni in many large and powerful professional networks in France and across the world.

Thanks to the strength of this relationship with the economic environment, 95% of graduates find jobs within 3 months of graduation.

Research

Research is essential to the Grandes Ecoles in their dual role as institutions of high level education as well as leading research and development centres. Contractual research and technology transfer place the Grandes Ecoles at the forefront of scientific and technological development. Research is not carried out in isolation but in partnership with laboratories and companies, in France and abroad. Substantial revenue is thus generated through public and private funding of research projects. Jointly supervised PhDs, hosting of postdocs and visiting professors coupled with state-of-the-art facilities all contribute to the excellence of the research activities in the respective fields of each institution.

A strong international dimension

The hosting of international students is central to the international profile of the Grandes Ecoles. This takes many forms : Joint PhDs, double degrees, recruitment to Master level programmes of Bachelor level international students, credit transfer student exchange, international Master programmes including Erasmus Mundus, internships etc. Great emphasis is placed on intercultural competences for all Grande Ecole students through the acquisition of foreign language skills and compulsory international experience via internships and study periods abroad.

Key figures

4 000 Master level graduates per year

16 % International students

885 PhD students

15 000 Projects with the corporate world per year

101 981 Master alumni

570 Partners worldwide

19 GRADUATE SCHOOLS...

4 FIELDS

Agriculture, Environment, Food Science, Health

■ AGROCAMPUS OUEST

Graduate School in Agricultural & Food sciences,
horticulture & landscaping
ANGERS
<http://www.agrocampus-ouest.fr>

■ ESA GROUP

Graduate School in Agriculture, Food industry and Environment
ANGERS
<http://www.groupe-esa.com>

■ ONIRIS

Nantes Atlantic National College of Veterinary Medicine, Food
Science and Engineering
NANTES
<http://www.oniris-nantes.fr>

Architecture and Design

■ ENSA NANTES

Nantes School of Architecture
NANTES
<http://www.nantes.archi.fr>

■ L'ECOLE DE DESIGN NANTES ATLANTIQUE

School of Design
NANTES
<http://www.lecolededesign.com>

Management

■ AUDENCIA NANTES

School of Management
NANTES
<http://www.audencia.com>

■ ESSCA

School of Management
ANGERS
<http://www.essca.fr>

Engineering

■ ARTS ET MÉTIERS PARISTECH ANGERS (ENSAM)

Graduate School of Engineering
ANGERS
http://www.ensam.eu/fr/centre_et_instituts/centre_angers

■ CENTRALE NANTES

Graduate School of Engineering
NANTES
<http://www.ec-nantes.fr>

■ MINES DE NANTES

Graduate School of Engineering
NANTES
<http://www.mines-nantes.fr>

■ ESAG

Advanced School of Applied Engineering Studies
ANGERS
<http://www.esag.terre.defense.gouv.fr>

■ ESAIP

Graduate School of Engineering
ANGERS
<http://www.esaip.org>

■ ESEO

Graduate School of Engineering
ANGERS
<http://www.eseo.fr>

■ ICAM

Graduate School of Engineering
NANTES
<http://www.icam.fr>

■ ISMANS

Graduate School of Engineering in Materials
and Advanced Technologies
LE MANS
<http://www.ismans.fr>

■ POLYTECH NANTES

Graduate School of Engineering of the University of Nantes
NANTES
<http://www.polytech.univ-nantes.fr>

■ ESIEA

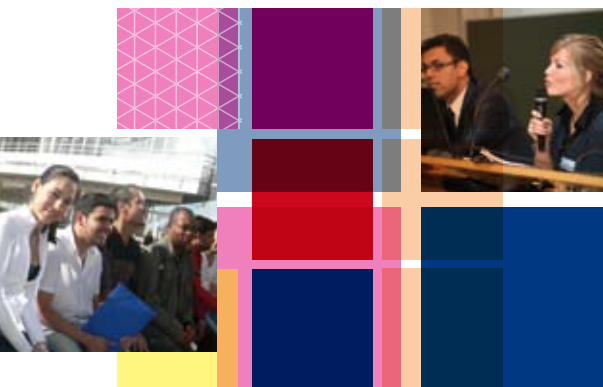
Graduate School of Engineering in Computer Science, Electronics
and Automated System
LAVAL
<http://www.esiea-ouest.fr>

■ ESTACA

Aeronautical, Automotive, Space and Railway Engineering school
LAVAL
<http://www.estaca.fr>

■ GESB

Academy of Wood Science and Technology
NANTES
<http://www.ecoledubois.fr>



Guosheng Wu

a Chinese Student



«After several interviews I was selected for the ESA programme in Angers. I greatly appreciated the “sandwich course” method which combines high quality teaching with the occasion to apply these ideas during my internships at Vilmorin company. The curriculum is coherent with the objective of training us to be “ingénieurs” in the French sense of the term, which does not always exist in other countries. The programme allowed me to learn the culture of France as much as Vilmorin company culture. I would advise a Chinese student in the programme to focus on learning French at the beginning and to make an effort to meet other international and French students. I made friends from all over the world and visited different regions in Europe.»

What students say

Kang Shen

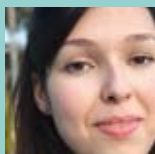
a final year Chinese Student



«I knew that on choosing to study in Nantes, I would be coming to a beautiful area and benefit from a privileged study environment. I also received a grant from the Pays de la Loire Regional Council and so did my internship in a local company.»

Nayara Sampaio Gomes

a Brésilian student



« My school in Brazil has many links with institutions in Europe, including ENSA School of Architecture in Nantes. I first of all chose the country, France, so as to learn another language but I didn't know the school before I came. It was a good surprise. The structure of the school is much more than I expected. Today I am in my third year and I have requested to continue my studies here. I will be very happy to stay and complete my diploma in Nantes.»

Ana Cristina Ilas Coussy,

a Romanian student

«On arrival, I was delighted by the welcome I was given. A « welcome team » was there to welcome and assist international students with accommodation and administrative details. I enjoyed discovering the Anjou area with its rich cultural heritage, its history, its castles and wine and the very friendly people.»



Grandes Écoles
Pays de la Loire

www.cge-paysdelaloire.com